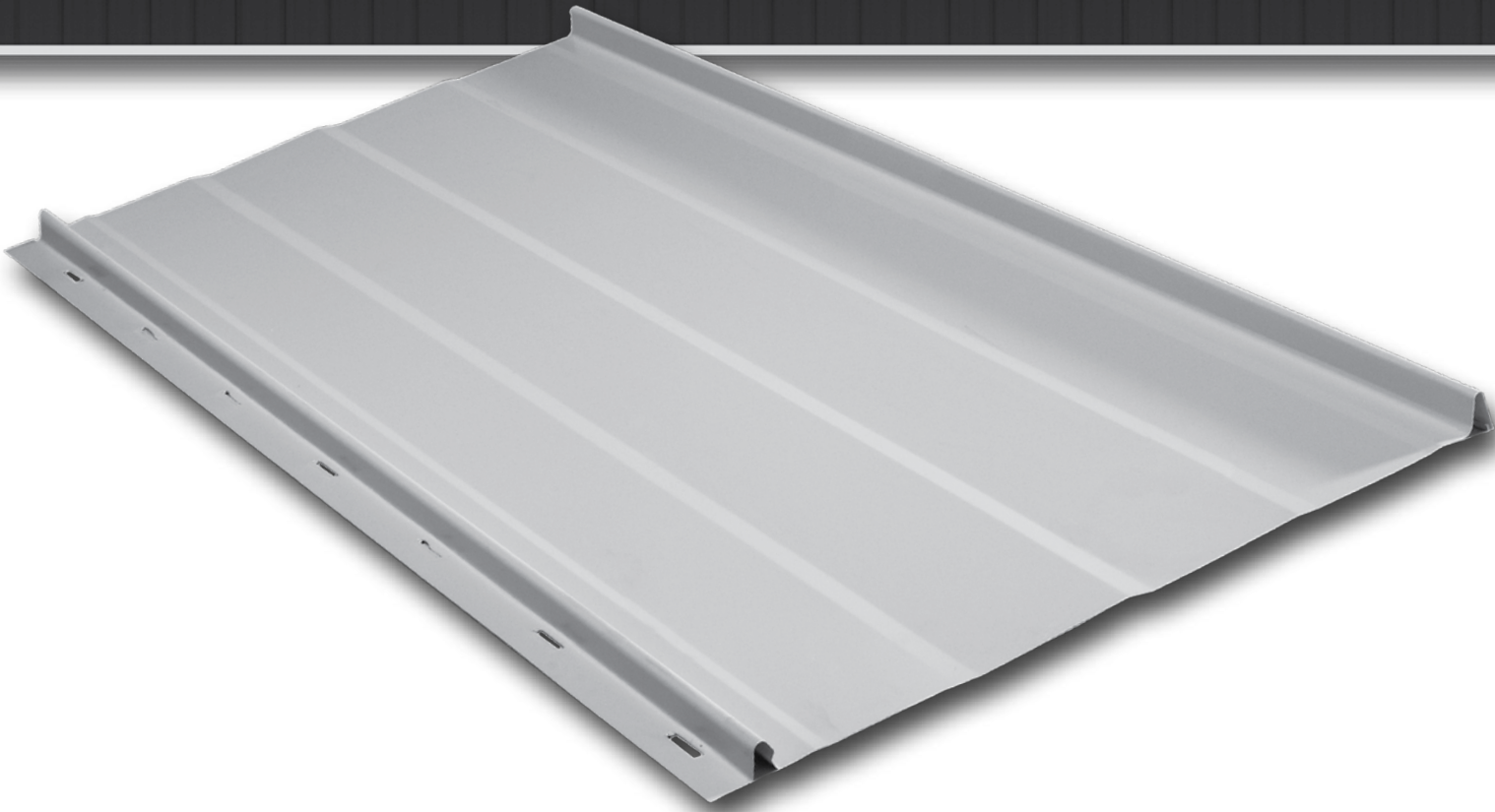


# TRIAD CORRUGATED METAL, INC.

COMMERCIAL | RESIDENTIAL | AGRICULTURAL



## Nailstrip Panel Guide

Nailstrip Panels are ideal for residential and architectural settings. The Nailstrip Panel is flexible and works well in a wide variety of building applications. The clip-less design saves you labor and money. Nailstrip is durable and can withstand extreme weather conditions.

### Table of Contents

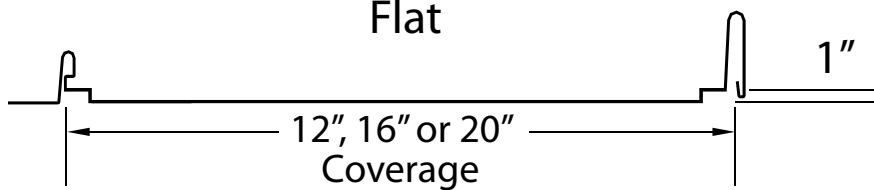
General Information	1
Nailstrip Panel Description & Test Data	2
Eave	3
Low Eave	5
Low Eave Gutter	7
Rake A	9
Rake B	11
Ridge Hip	13
End Wall	15
High Eave	17
Side Wall	19
Field Hem	21

# Nailstrip

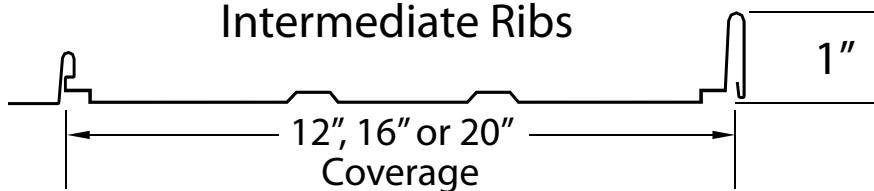


- Finishes: Classic Sil-Poly & Premium Kynar
- Metals: Galvanized, Galvalume®, Copper and Aluminum
- Gauges: 26ga and 24ga
- Coverage: 12", 16" or 20" panel coverage; 1" rib height
- Features:
  - Δ Architectural standing seam panel
  - Δ Applies over open framing or solid substrate
  - Δ Snap together panel system
  - Δ Minimum roof slope: 3:12
  - Δ Cut to the inch

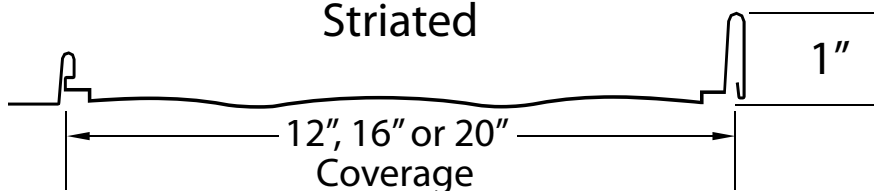
Flat



Intermediate Ribs



Striated



## ACCESSORIES



Number in circles refer to page numbers in TCM Metal Roofing Guide.





# TCM Nailstrip (24GA. 16" x 1")

Panel Description  
& Test Data

**PANEL DESCRIPTION:** 1" Nail strip, 24 gauge (0.023" min.), MSG coated steel, 16" max width, 1" tall rib, painted or unpainted. (material complies with FBC 2007, Sections 1504.3.2). Bare galvanized limited warranty - 20 years for integrity and corrosion perforation, "Galvalume" limited warranty - 25 years.

**PAINT SYSTEMS:** Silicone polyester (Limited warranty 40 year for integrity and adhesion, 30 year for chalking, 30 year for fade resistance.) Kynar Fluoropon (Limited warranty 35 years for integrity and adhesion, 30 years for chalking, 30 years for fade resistance.)

**PANEL FASTENER:** (1) #10-12 X 1", #2 Phillips Drive, Pancake head @ 16"O.C. (Corrosion resistant per FBC 2007 Section 1507.4.4)

**MAXIMUM ALLOWABLE PANEL UPLIFT PRESSURE:** 100PSF, pressure based on UL 580/UL 1897 testing, UL construction #600

**ROOF PANEL FIRE RATING:** Panel has a Class B fire exposure rating in accordance with FBC Section 1505.3 without an additional fire barrier.

**MINIMUM ROOF SLOPE:** 3:12 Minimum slope (complies with FBC 2007, Section 1507.4.2 and manufacturers recommendations.)

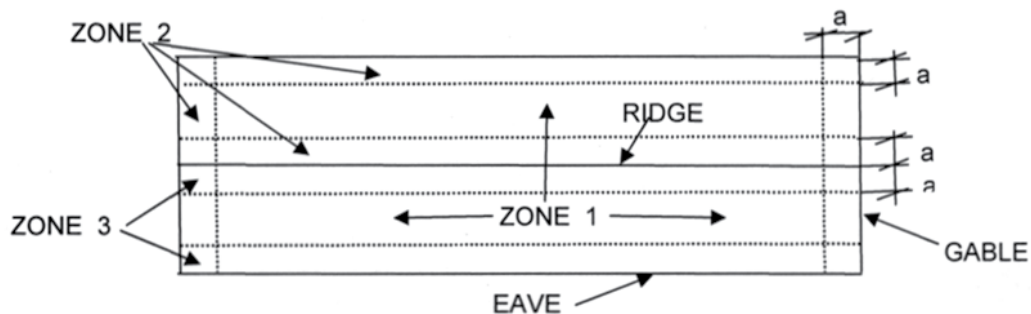
**SUBSTRATE:** Min. 19/32" thick, APA rated plywood, grade C-D, All joints sealed with one part urethane sealant feathered out from the joint. Plywood must be designed in accordance with FBC 2007.

**VAPOR BARRIER:** RRecommended synthetic sheet (Titanium UDL30), Minimum 30# asphalt saturated organic felts paper in accordance with ASTM 0226, Type I or Type II.

## TESTING (Dated July, 2008)

Test is based on 24 gauge 16" wide panel with 1" rib installed over 19/32 plywood Buildings having a mean roof height less than or equal to 20', roof slope pf 3/12 to 6/12 with gable. Wind speeds 110 - 130 MPH, exposure C, 1+1.0, based on FLORIDA BUILDING CODE 2007

1" 24 GA. NAILSTRIP, 16" WIDE FASTENER SPACING					
			WIND SPEED ZONE		
			110	120	130
ZONE	FASTENER	SUBSTRATE	ON CENTER SPACING	ON CENTER SPACING	ON CENTER SPACING
ZONE 1	(2) #10-12 X 1"	19/21" CDX SEALED	16"	16"	16"
ZONE 2	(2) #10-12 X 1"	19/21" CDX SEALED	16"	16"	16"
ZONE 3	(2) #10-12 X 1"	19/21" CDX SEALED	16"	16"	16"



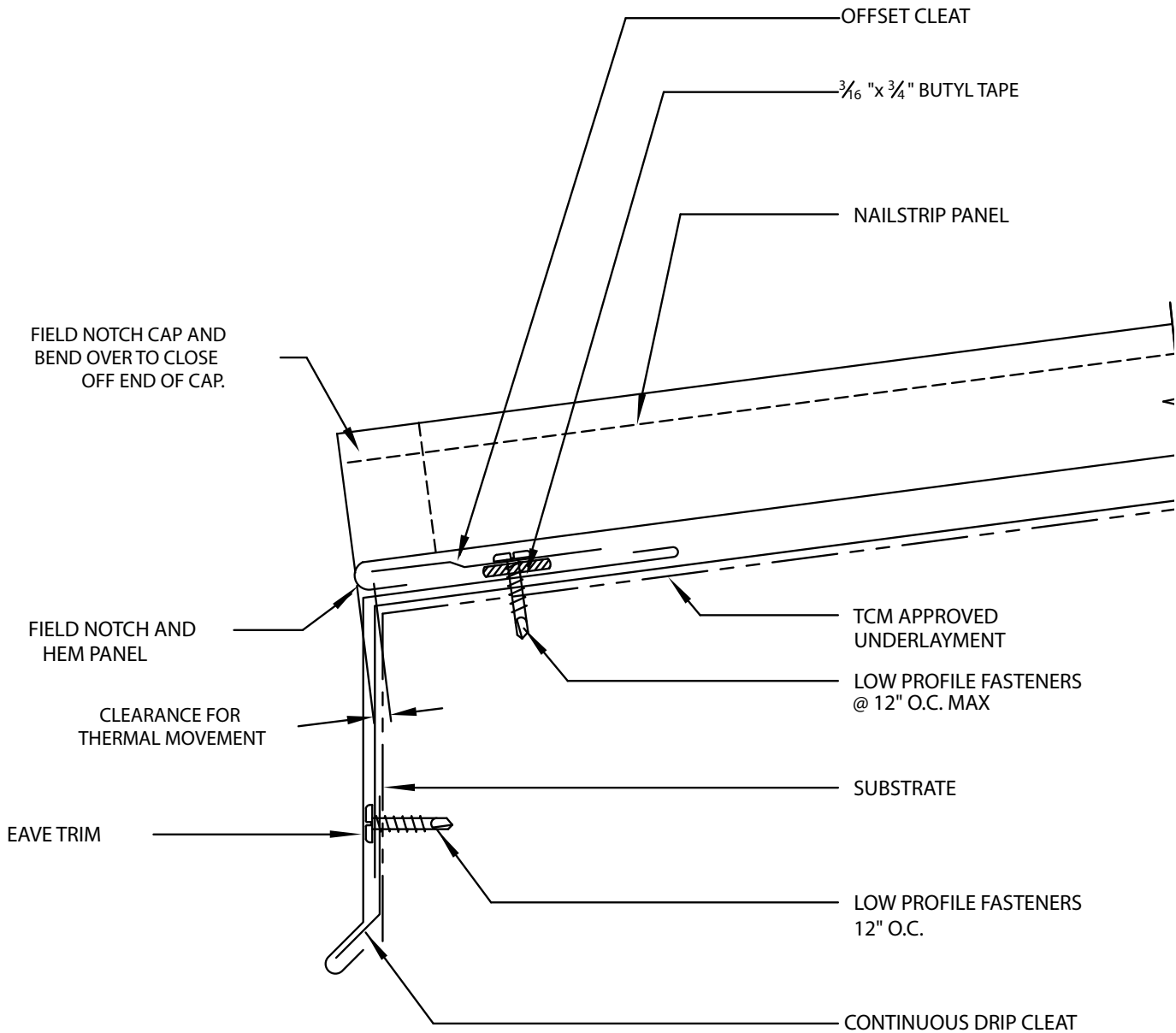
NOTE: Dimension (a) is defined as 10% of the minimum width of the building or 40% of the mean height of the roof, whichever is smaller, however, (a) cannot be less than either 4% of the minimum width of the building or 3 feet.





# Nailstrip

Eave

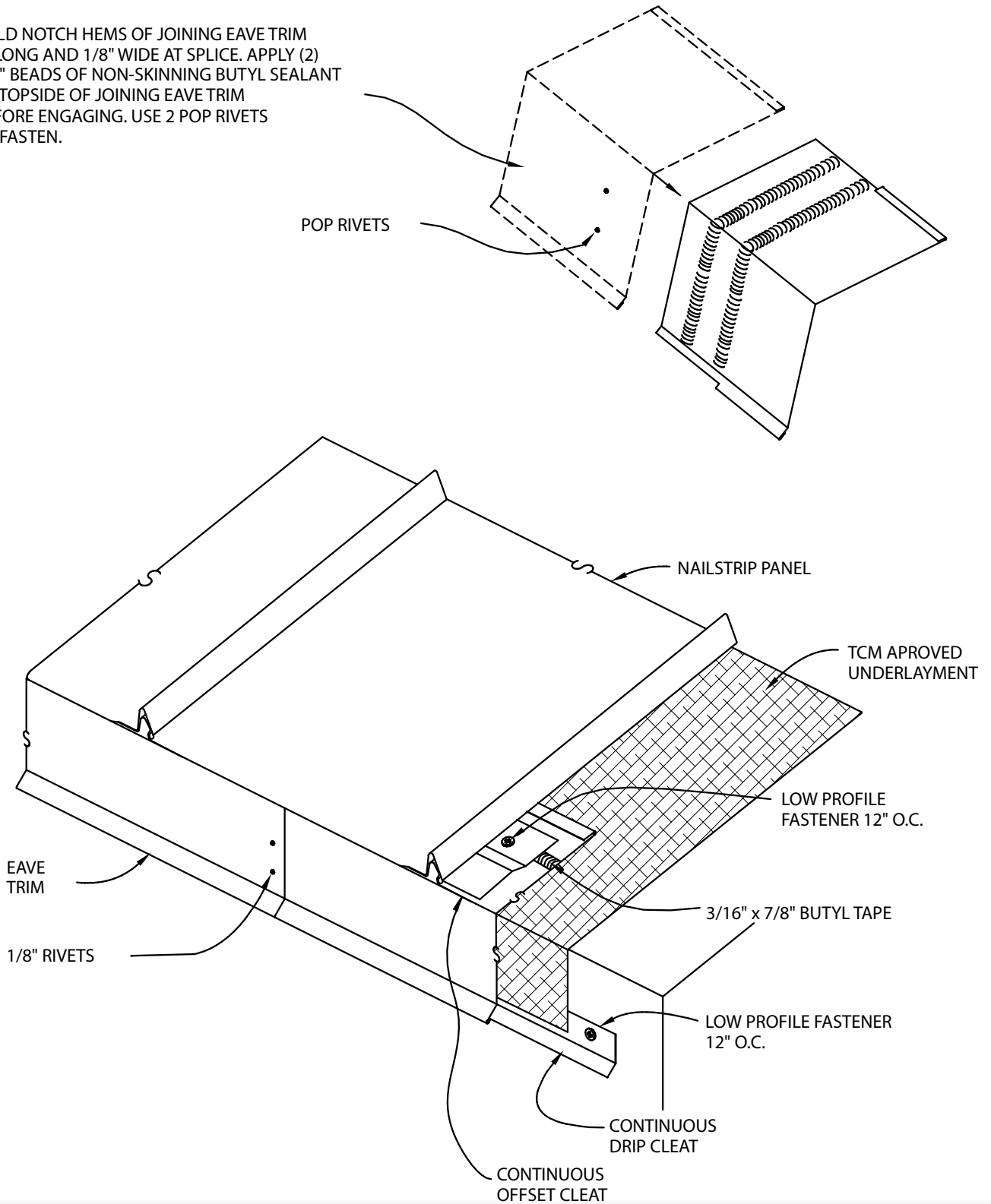




# Nailstrip

Eave  
ISO View

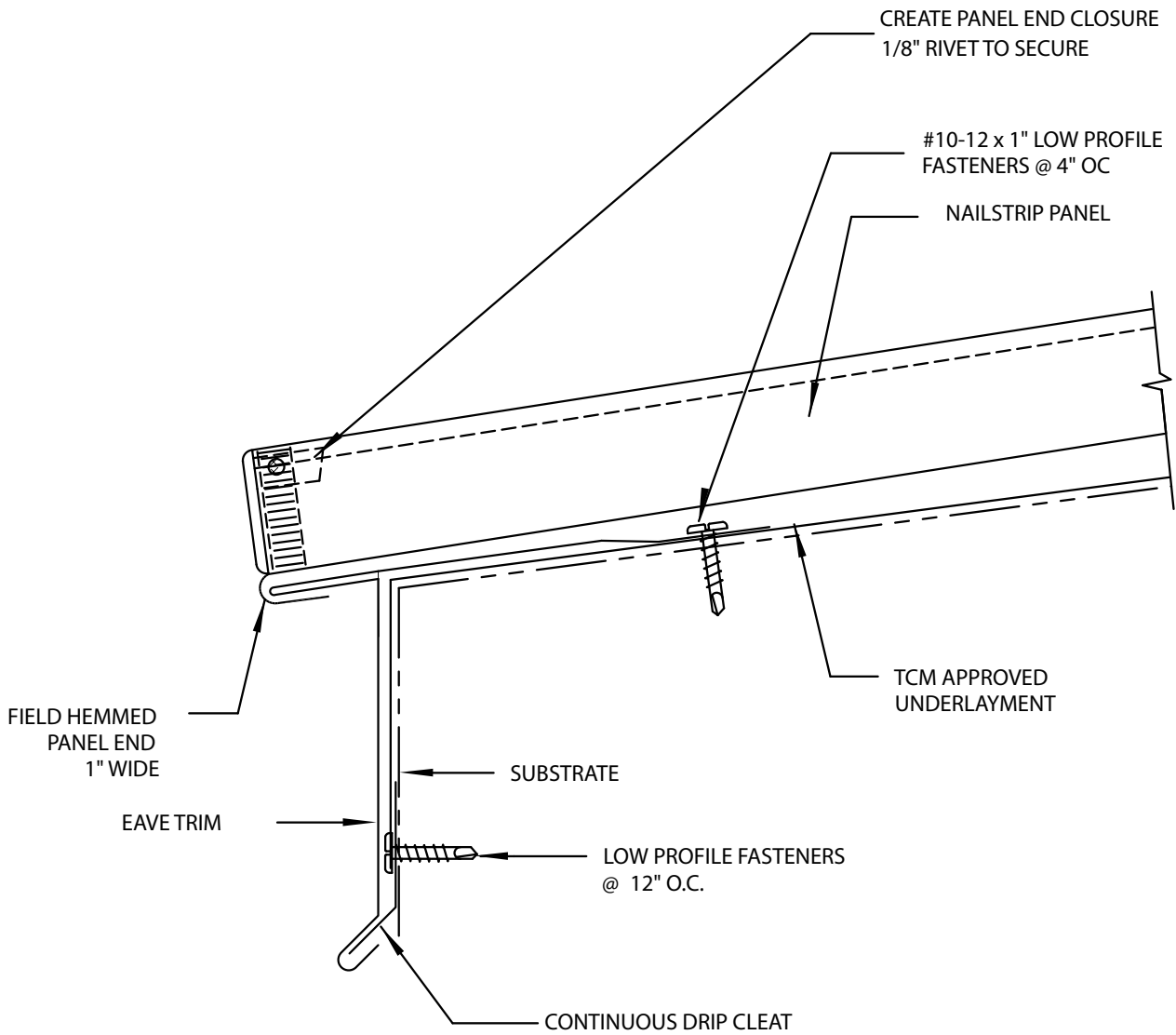
FIELD NOTCH HEMS OF JOINING EAVE TRIM  
3" LONG AND 1/8" WIDE AT SPLICE. APPLY (2)  
3/8" BEADS OF NON-SKINNING BUTYL SEALANT  
TO TOPSIDE OF JOINING EAVE TRIM  
BEFORE ENGAGING. USE 2 POP RIVETS  
TO FASTEN.





# Nailstrip

Low Eave

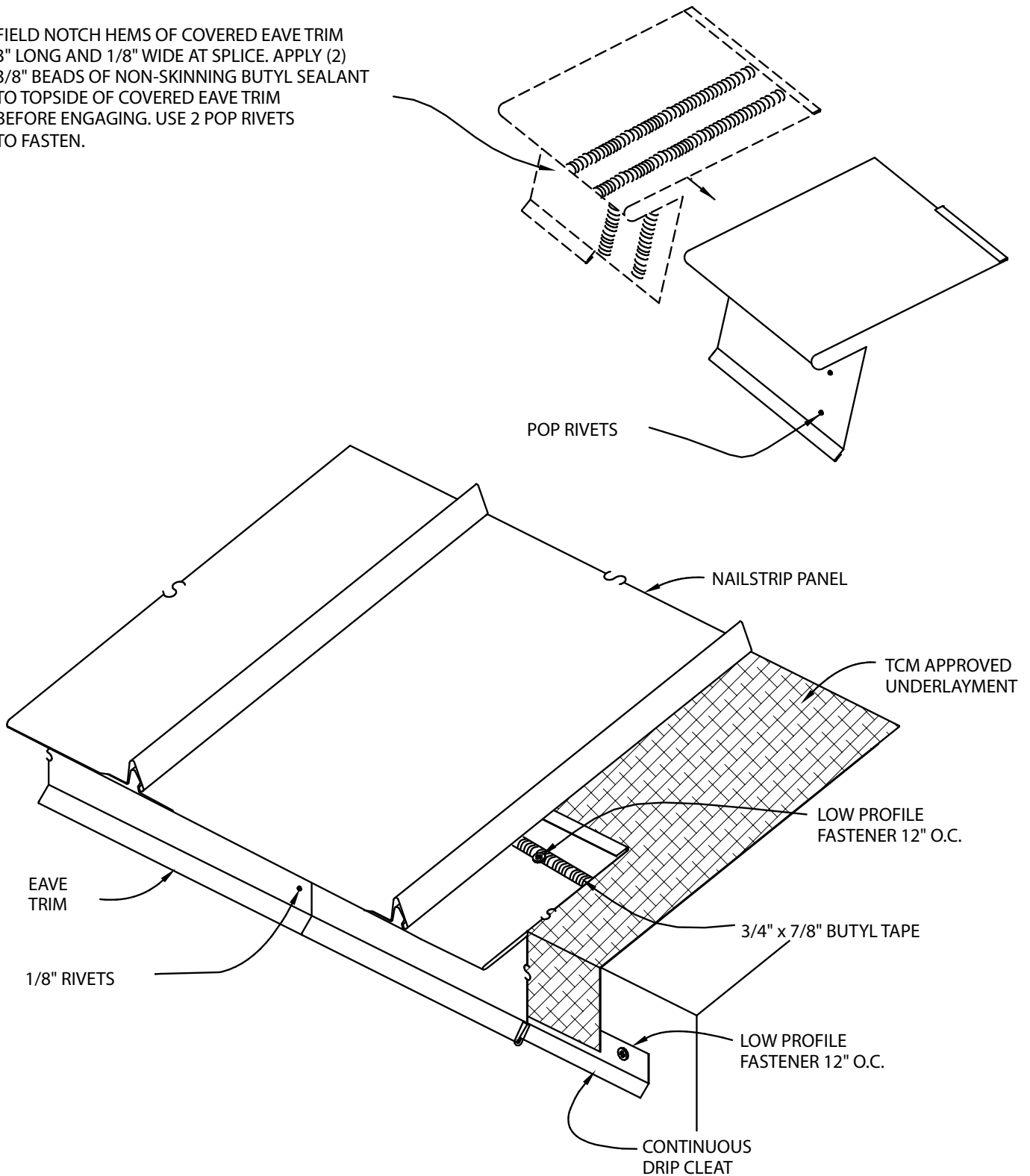




# Nailstrip

Low Eave  
ISO View

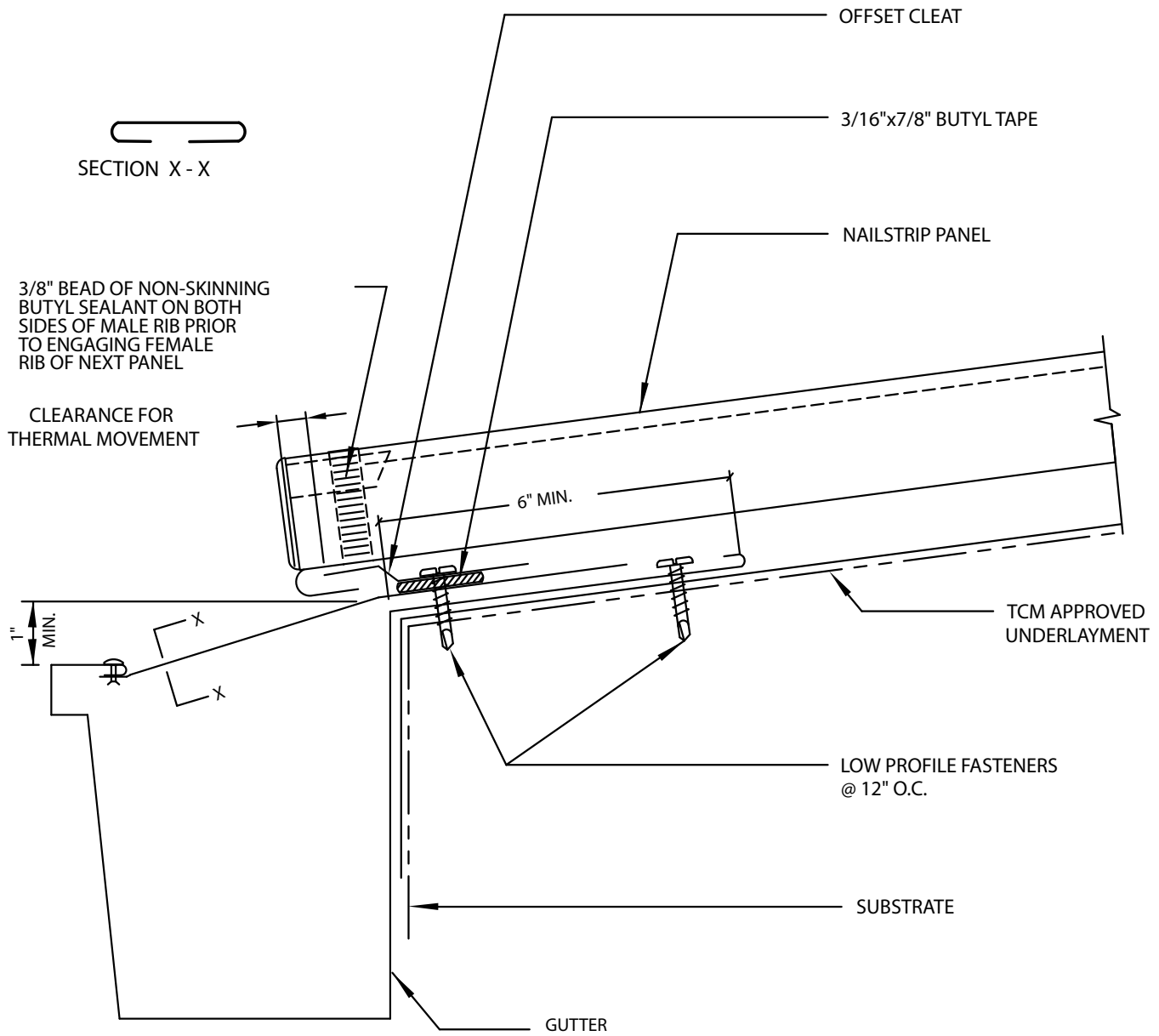
FIELD NOTCH HEMS OF COVERED EAVE TRIM 3" LONG AND 1/8" WIDE AT SPLICE. APPLY (2) 3/8" BEADS OF NON-SKINNING BUTYL SEALANT TO TOPSIDE OF COVERED EAVE TRIM BEFORE ENGAGING. USE 2 POP RIVETS TO FASTEN.





# Nailstrip

Low Eave Gutter

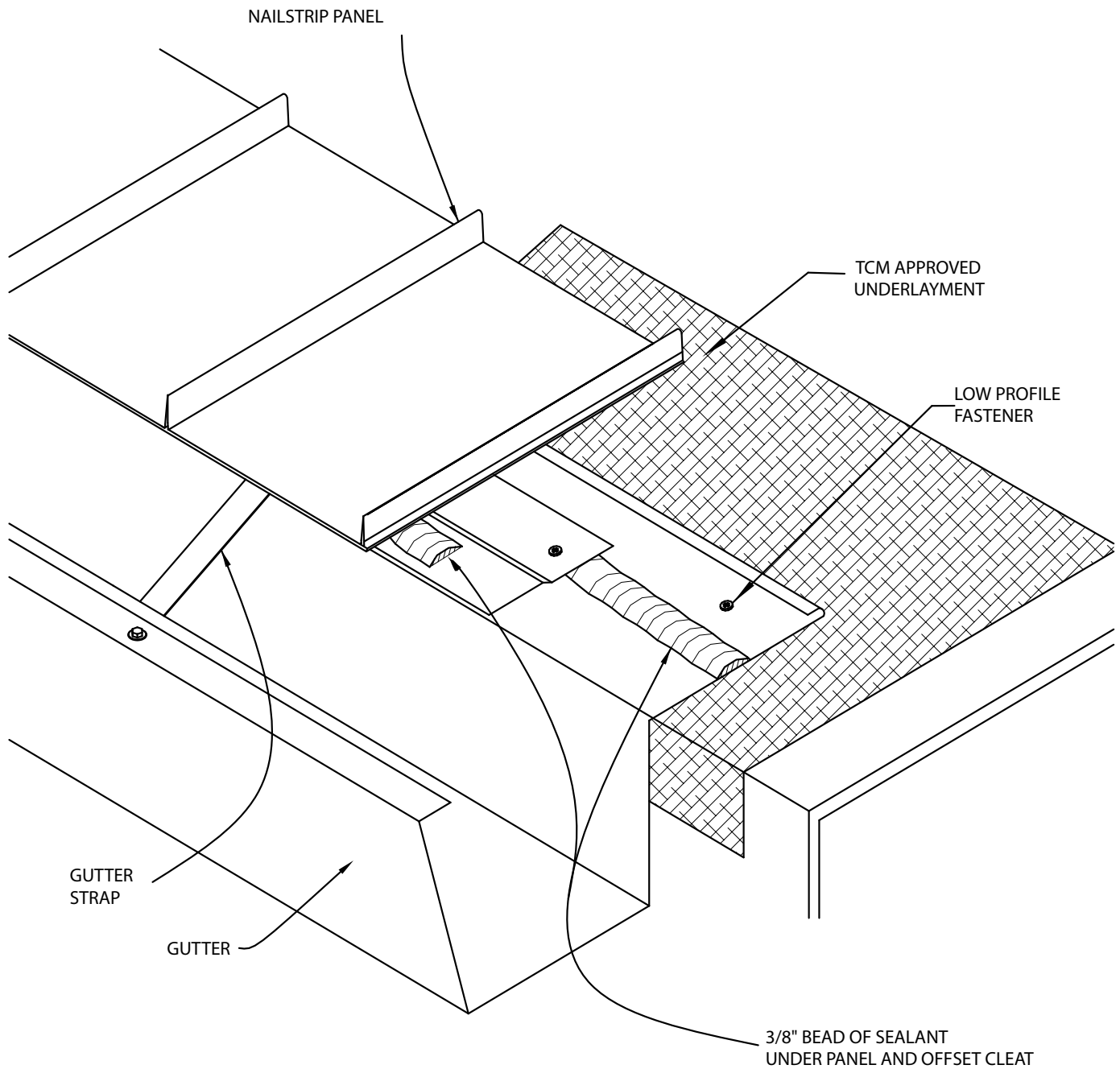






# Nailstrip

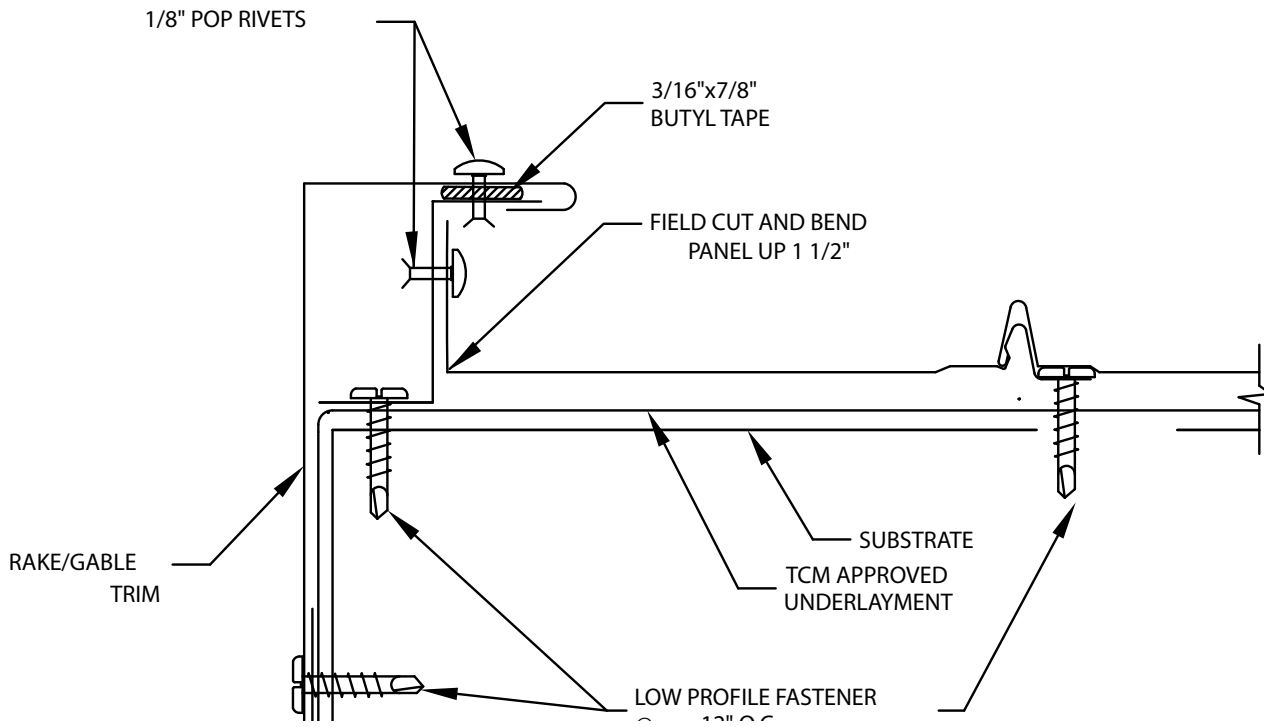
Low Eave Gutter  
ISO View





# Nailstrip

Rake A

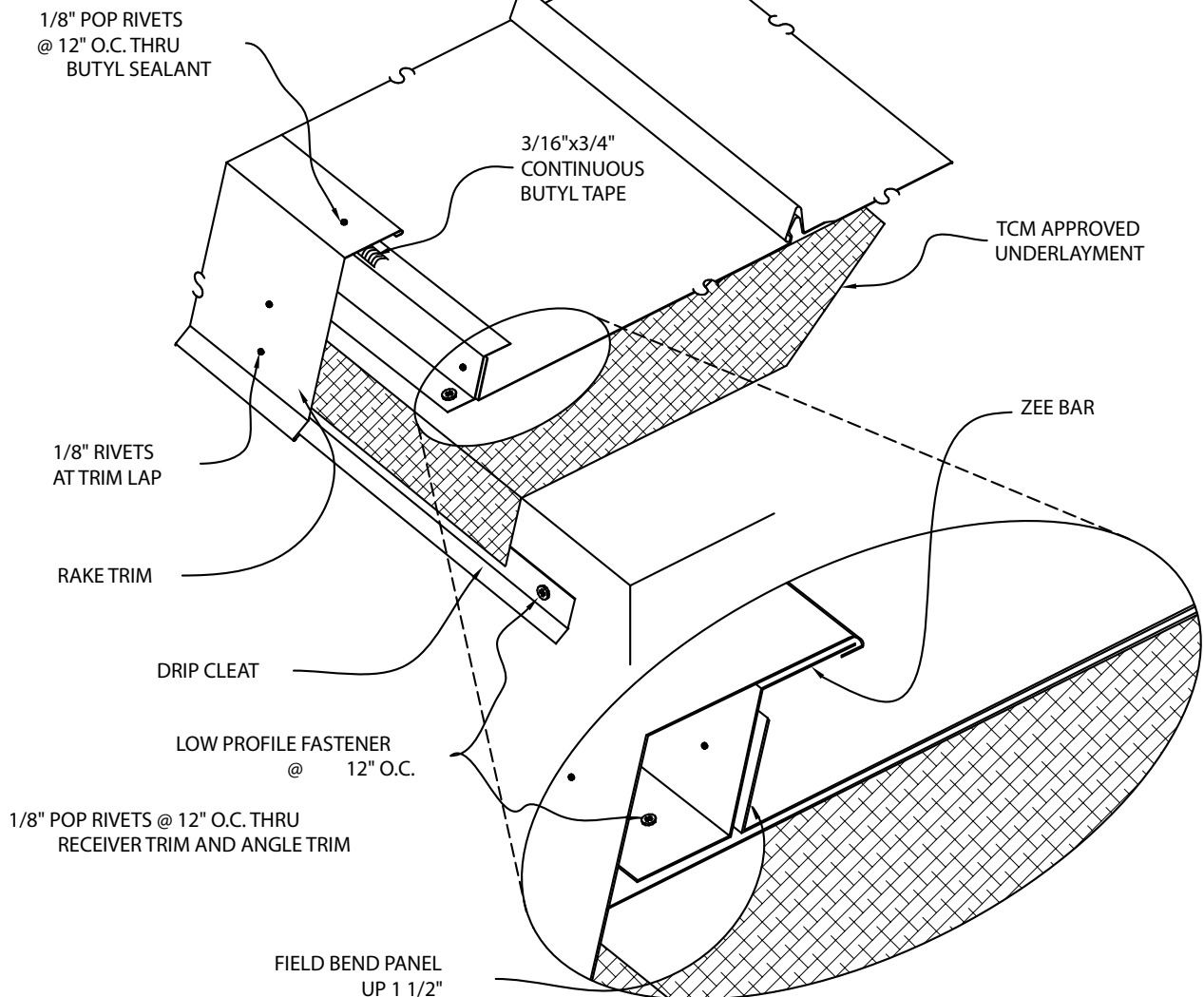
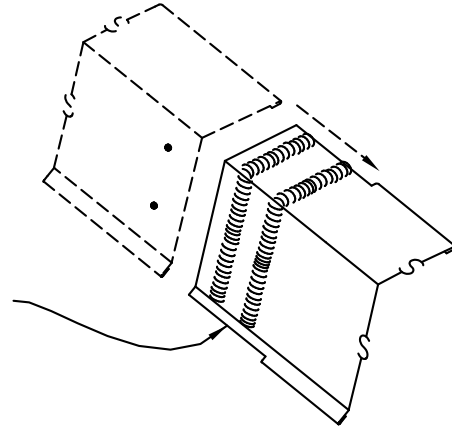




# Nailstrip

Rake A  
ISO View

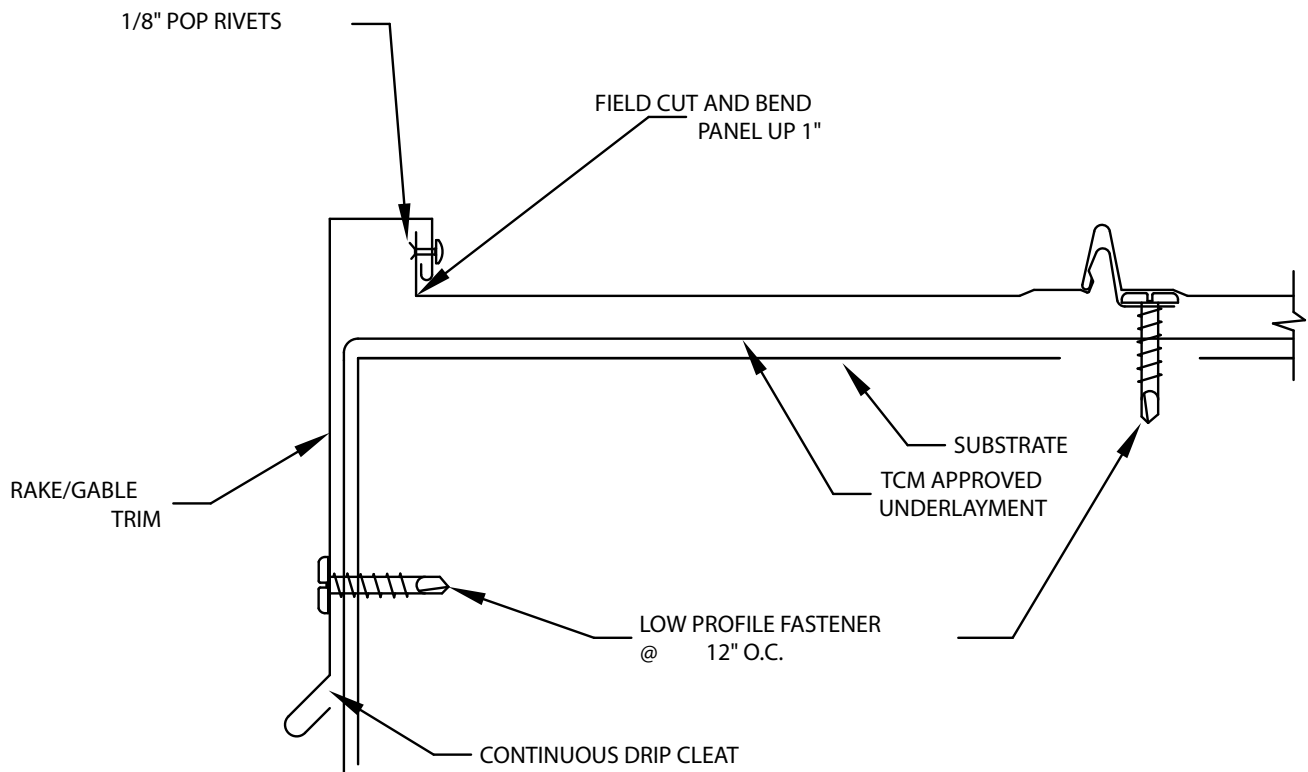
FIELD NOTCH HEMS OF UNDER TRIM PIECE  
3" LONG AND 1/8" WIDE AT SPLICE. APPLY (2)  
3/8" BEADS OF NON-SKINNING BUTYL SEALANT  
TO TOPSIDE OF UNDER PIECE BEFORE ENGAGING.  
USE 2 POP RIVETS TO SECURE.





# Nailstrip

Rake B

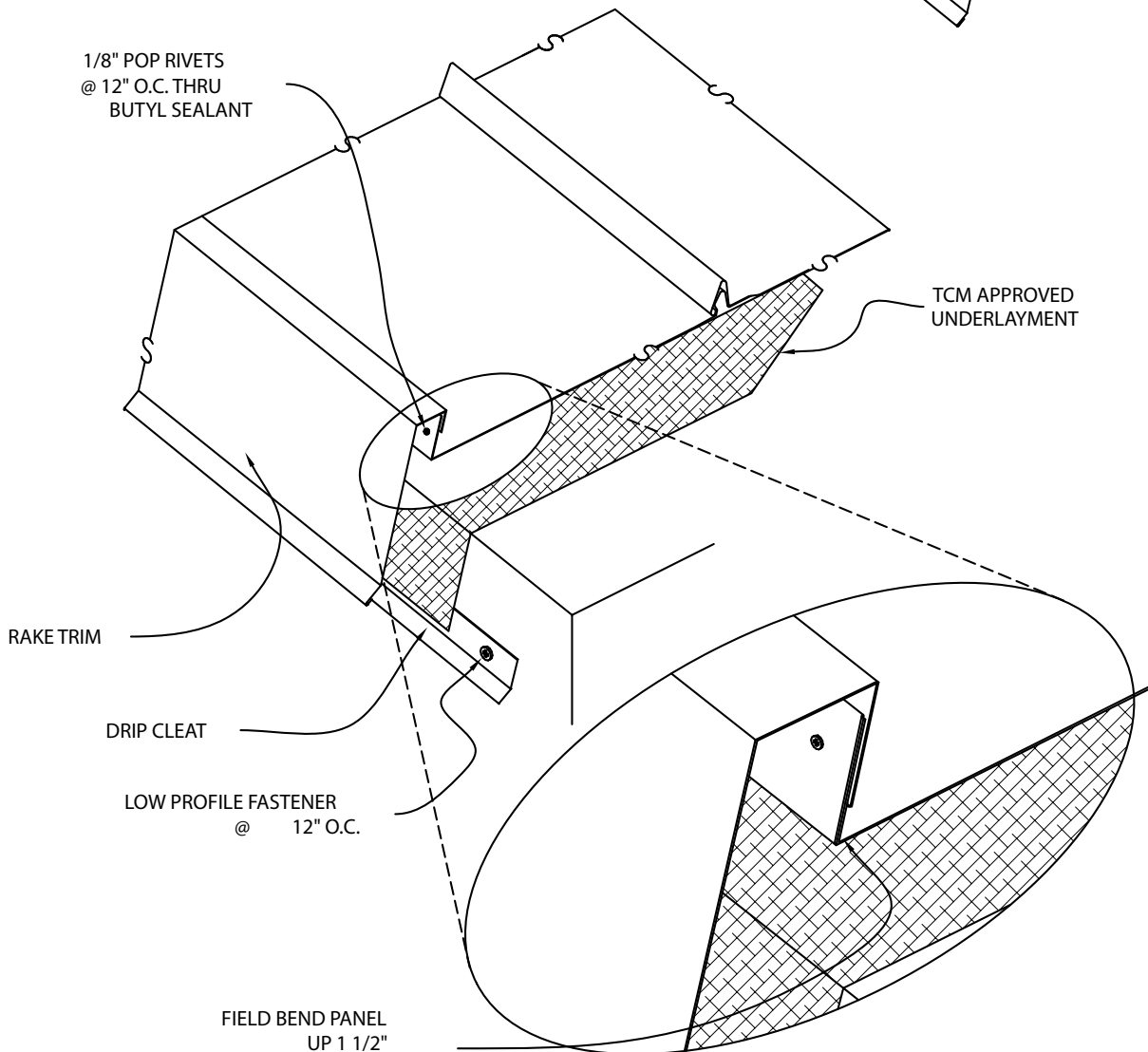
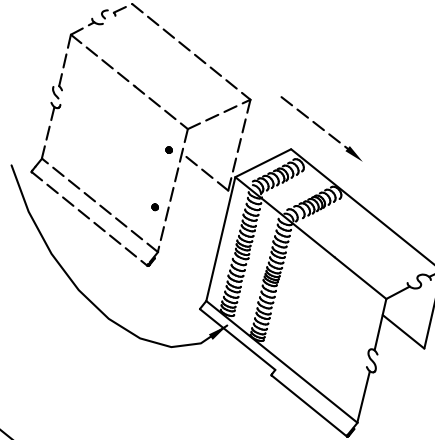




# Nailstrip

Rake B  
ISO View

FIELD NOTCH HEMS OF UNDER TRIM PIECE  
3" LONG AND 1/8" WIDE AT SPLICE. APPLY (2)  
3/8" BEADS OF NON-SKINNING BUTYL SEALANT  
TO TOPSIDE OF UNDER PIECE BEFORE ENGAGING.  
USE 2 POP RIVETS TO SECURE.

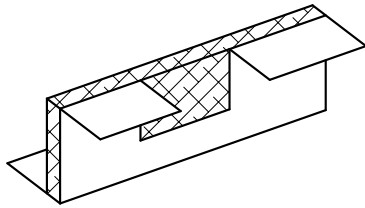




# Nailstrip

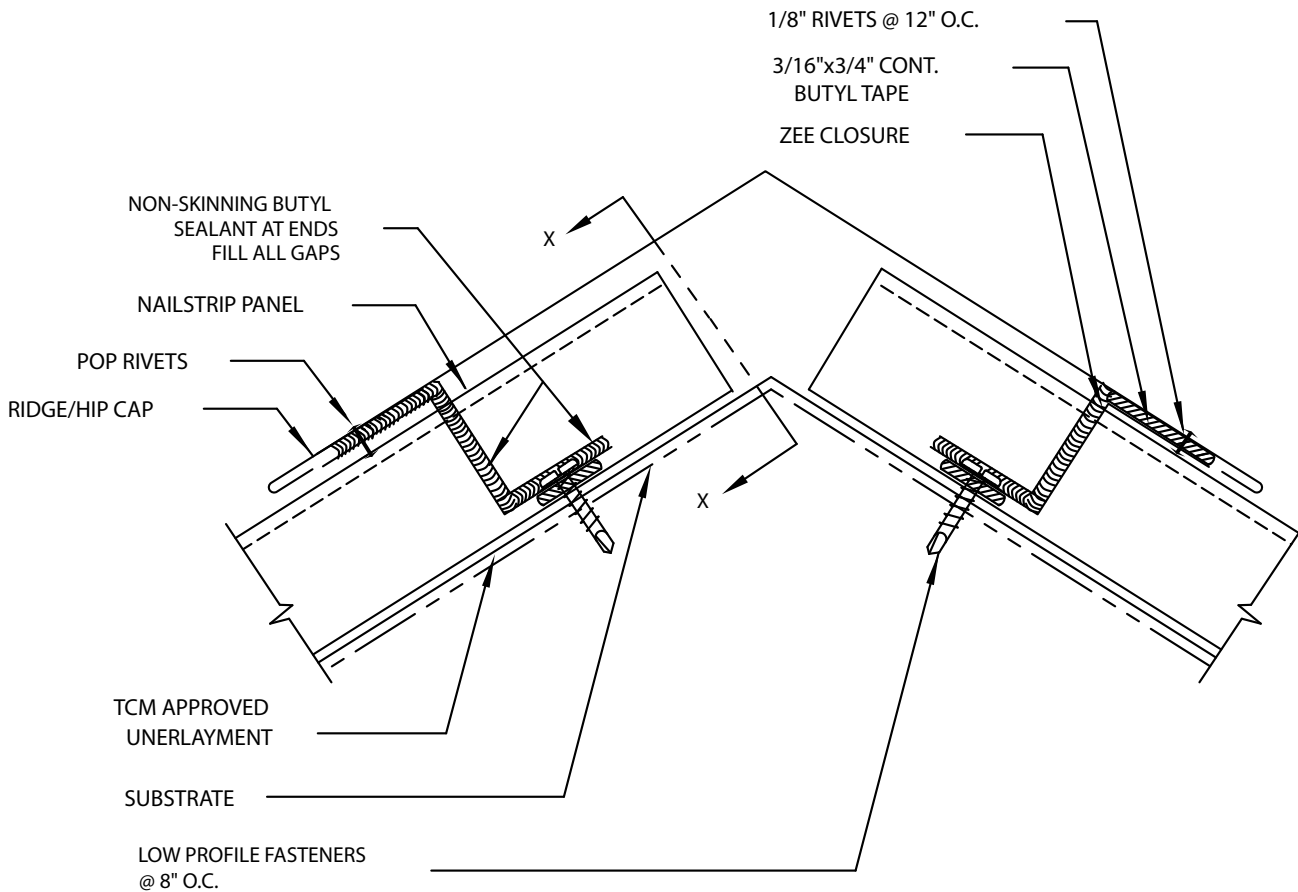
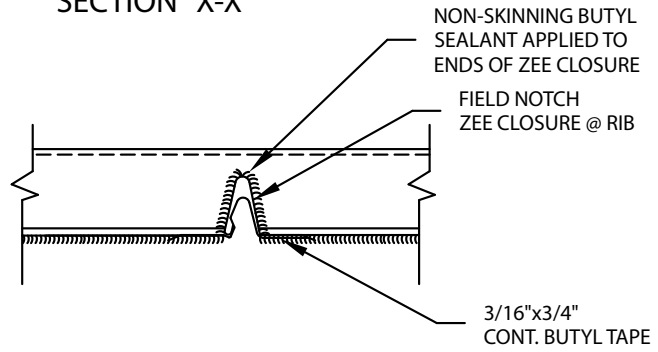
Ridge Hip

## ALTERNATE: VENTED RIDGE



NOTE: TO VENT RIDGE NOTCH ZEE BAR  
1" DEEP/INSERT VENTING  
CLOSURE MATERIAL BEHIND

## SECTION "X-X"

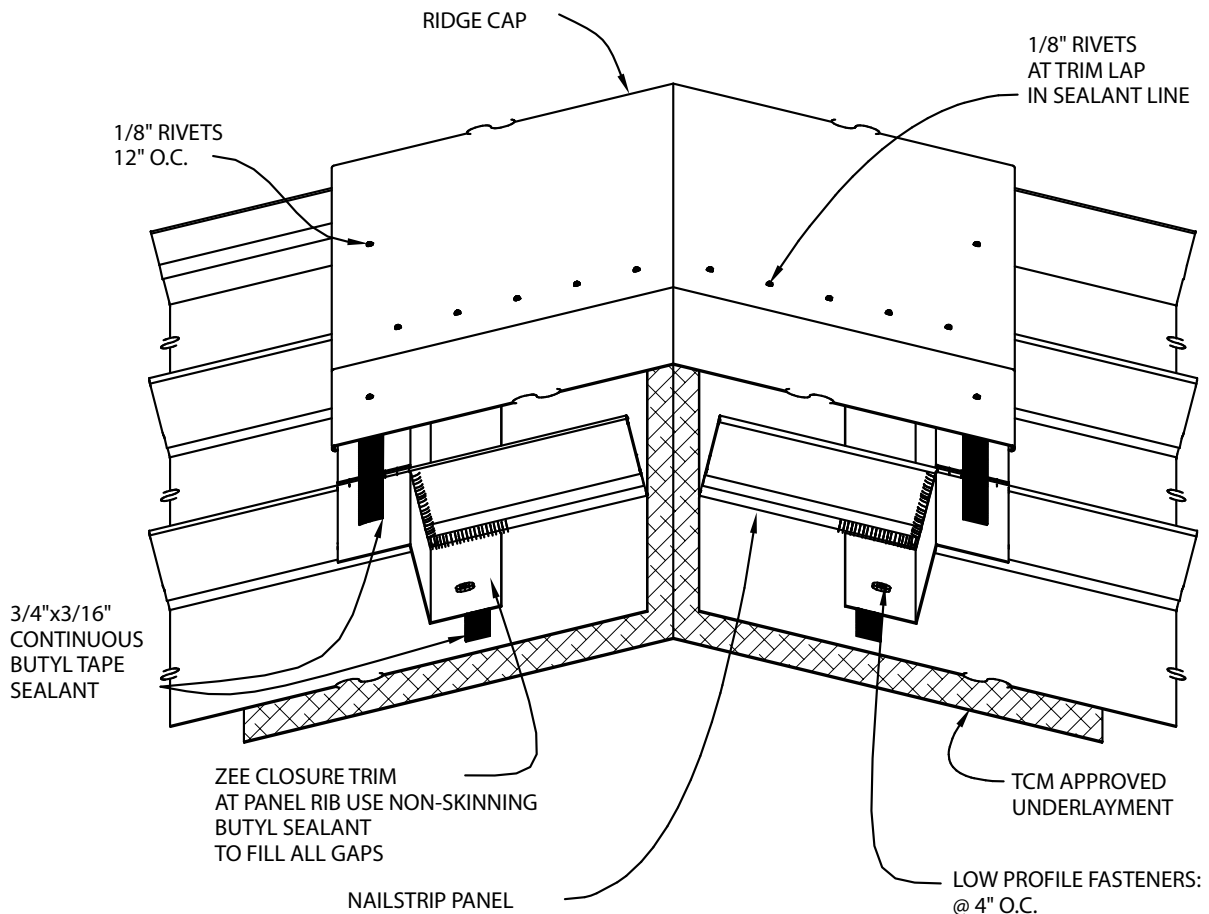
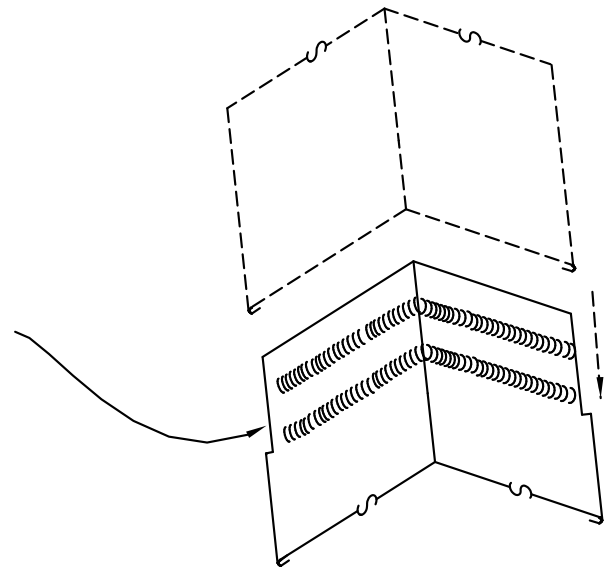




# Nailstrip

Ridge Hip  
ISO View

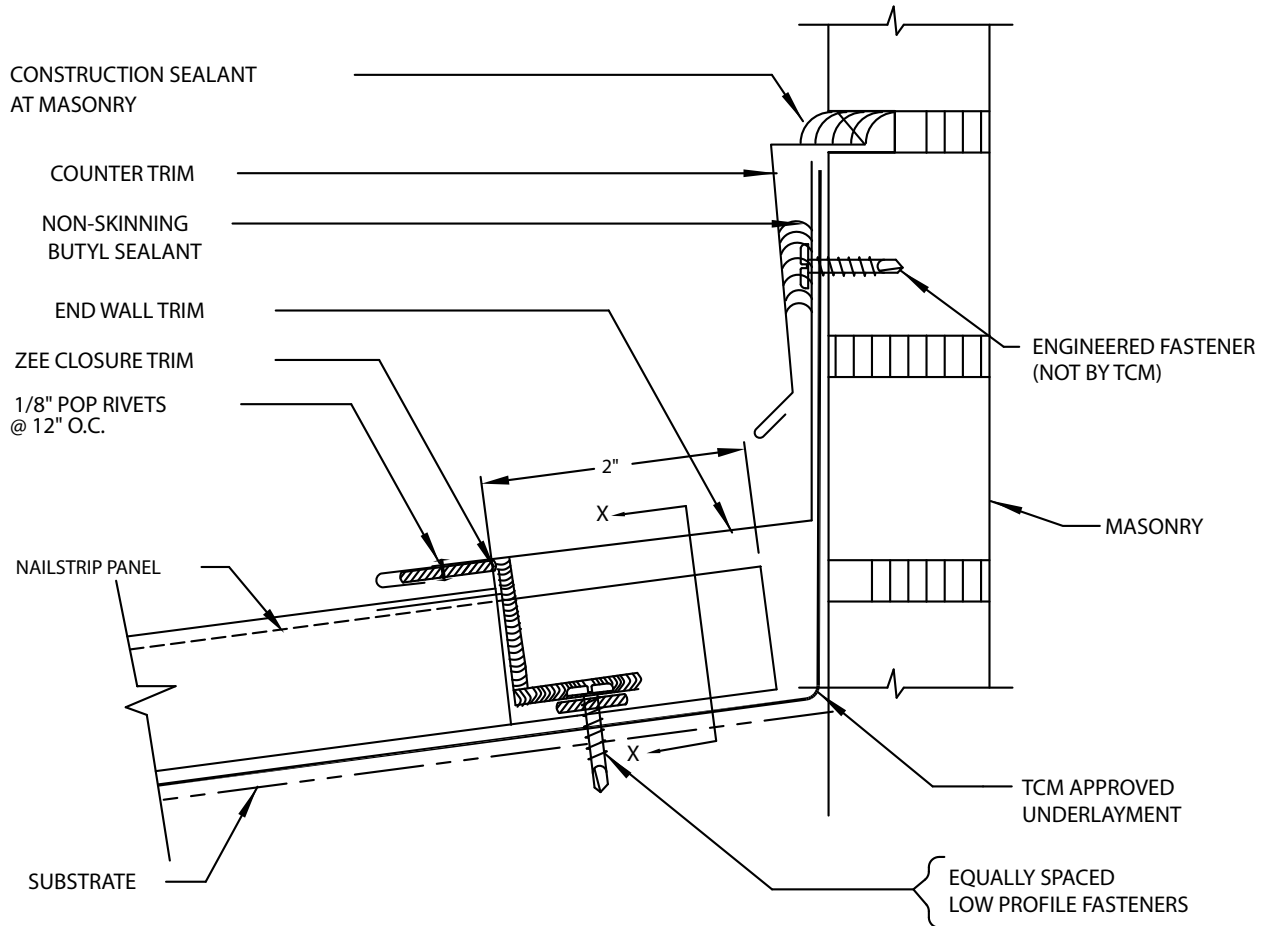
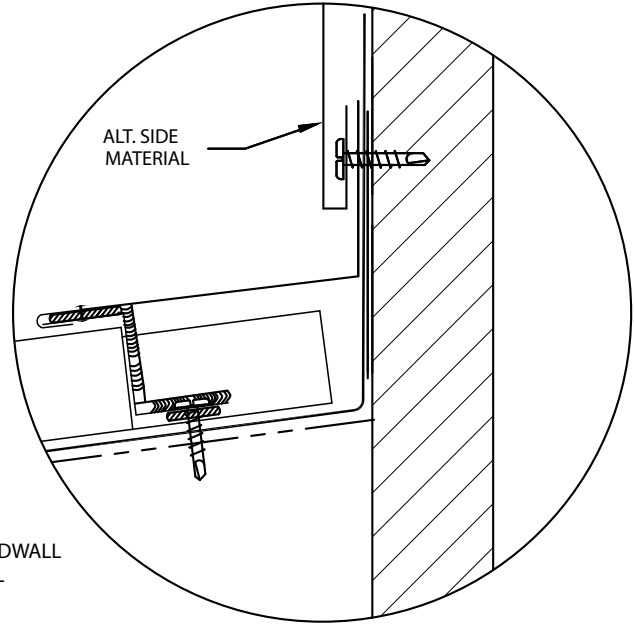
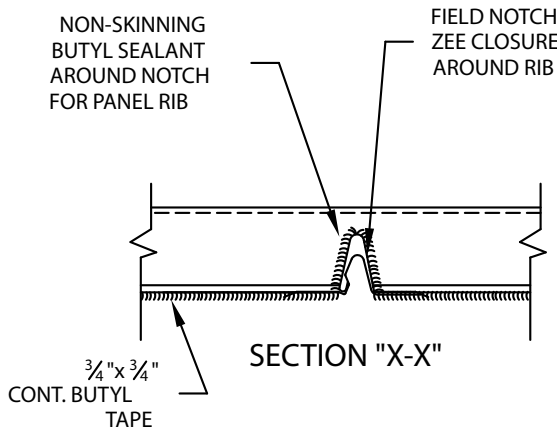
FIELD NOTCH HEMS OF UNDER TRIM PIECE  
3" LONG AND 1/8" WIDE AT SPLICE. APPLY (2)  
3/8" BEADS OF NON-SKINNING BUTYL SEALANT  
TO TOPSIDE OF UNDER HIP CAP BEFORE ENGAGING.  
USE 2 POP RIVETS TO SECURE.





# Nailstrip

End Wall



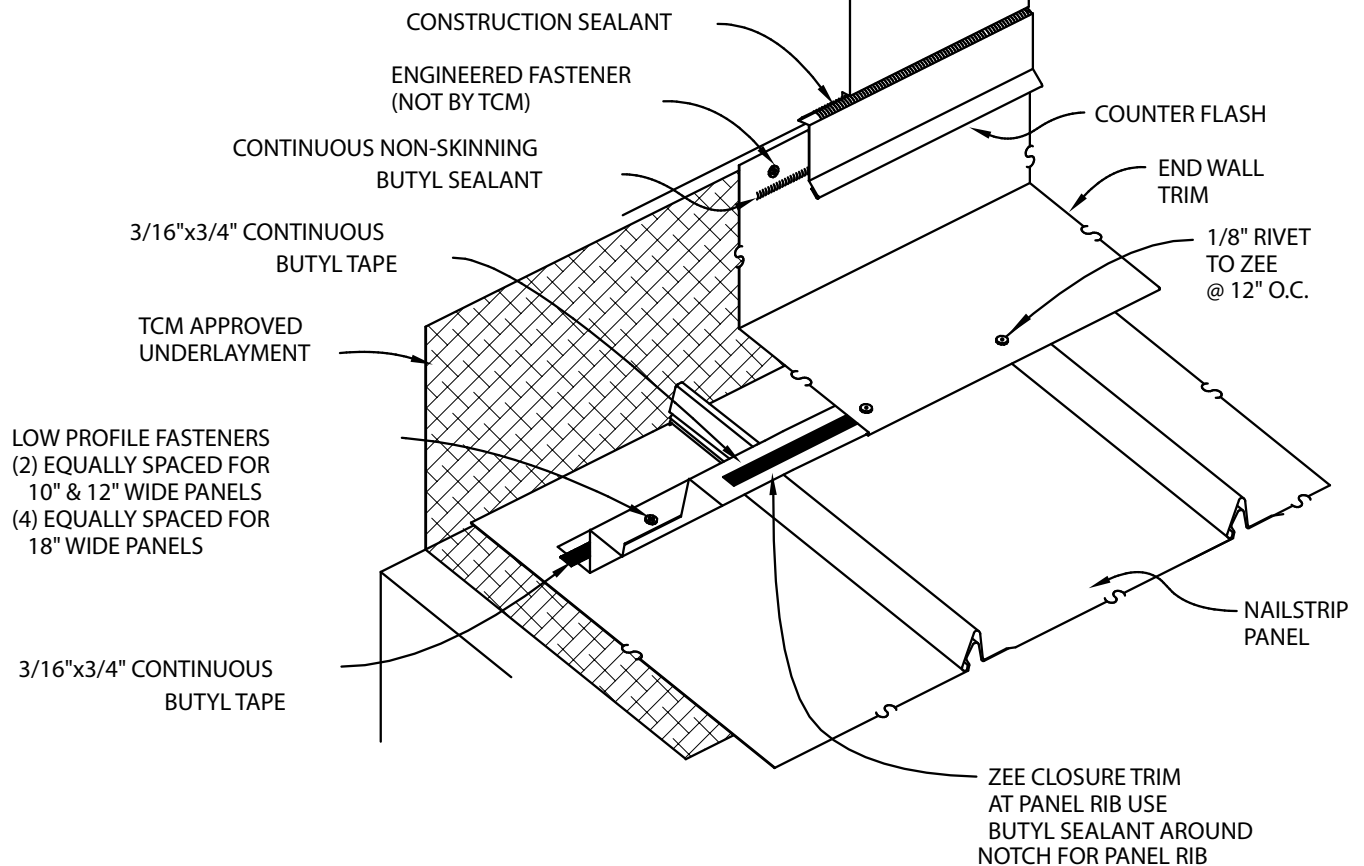
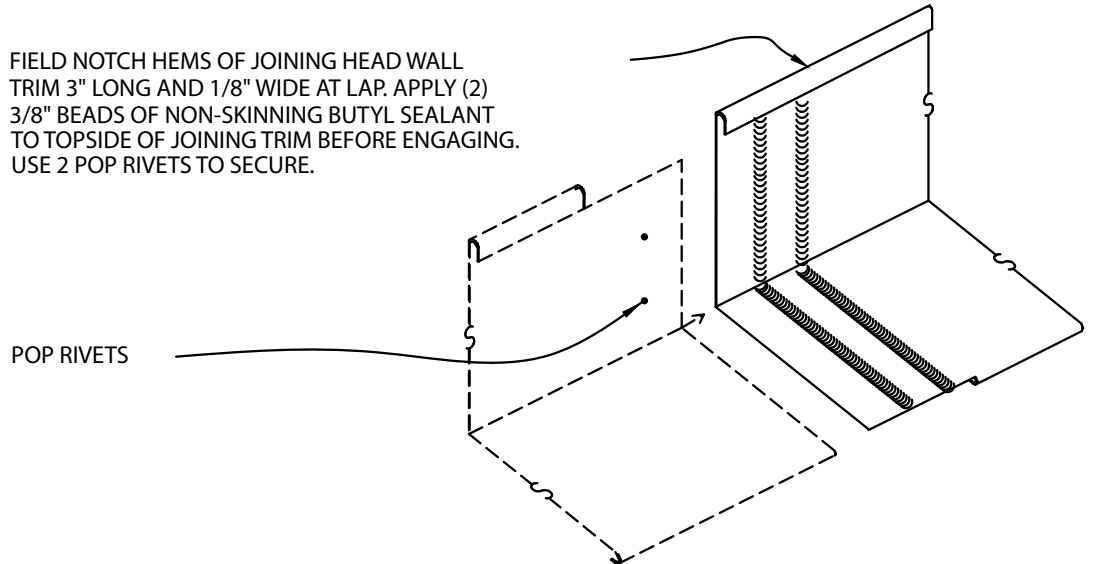




# Nailstrip

End Wall  
ISO View

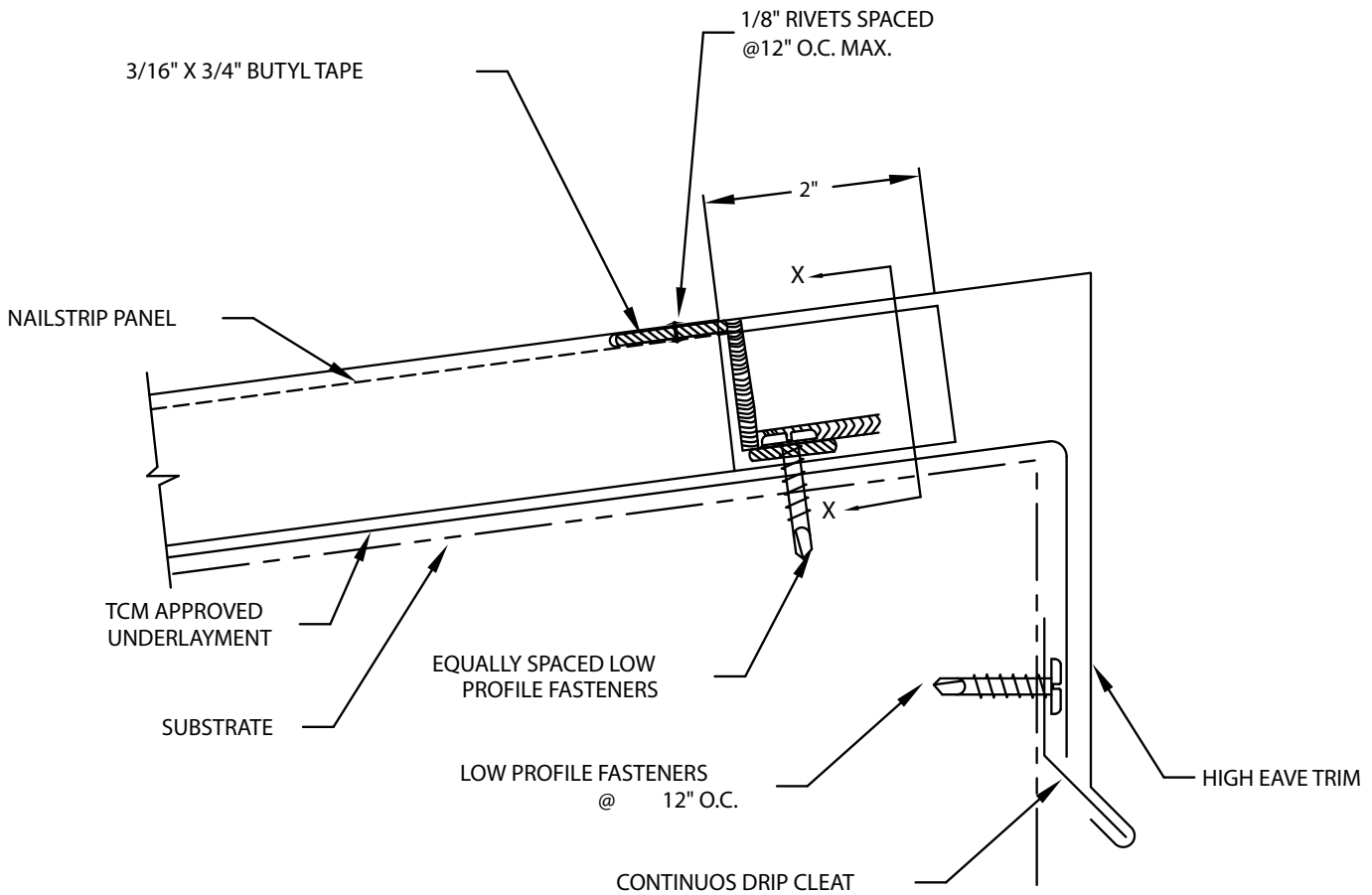
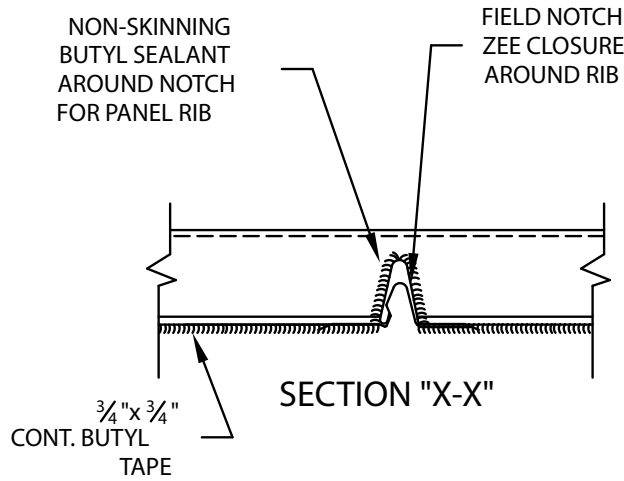
FIELD NOTCH HEMS OF JOINING HEAD WALL TRIM 3" LONG AND 1/8" WIDE AT LAP. APPLY (2) 3/8" BEADS OF NON-SKINNING BUTYL SEALANT TO TOPSIDE OF JOINING TRIM BEFORE ENGAGING. USE 2 POP RIVETS TO SECURE.





# Nailstrip

High Eave

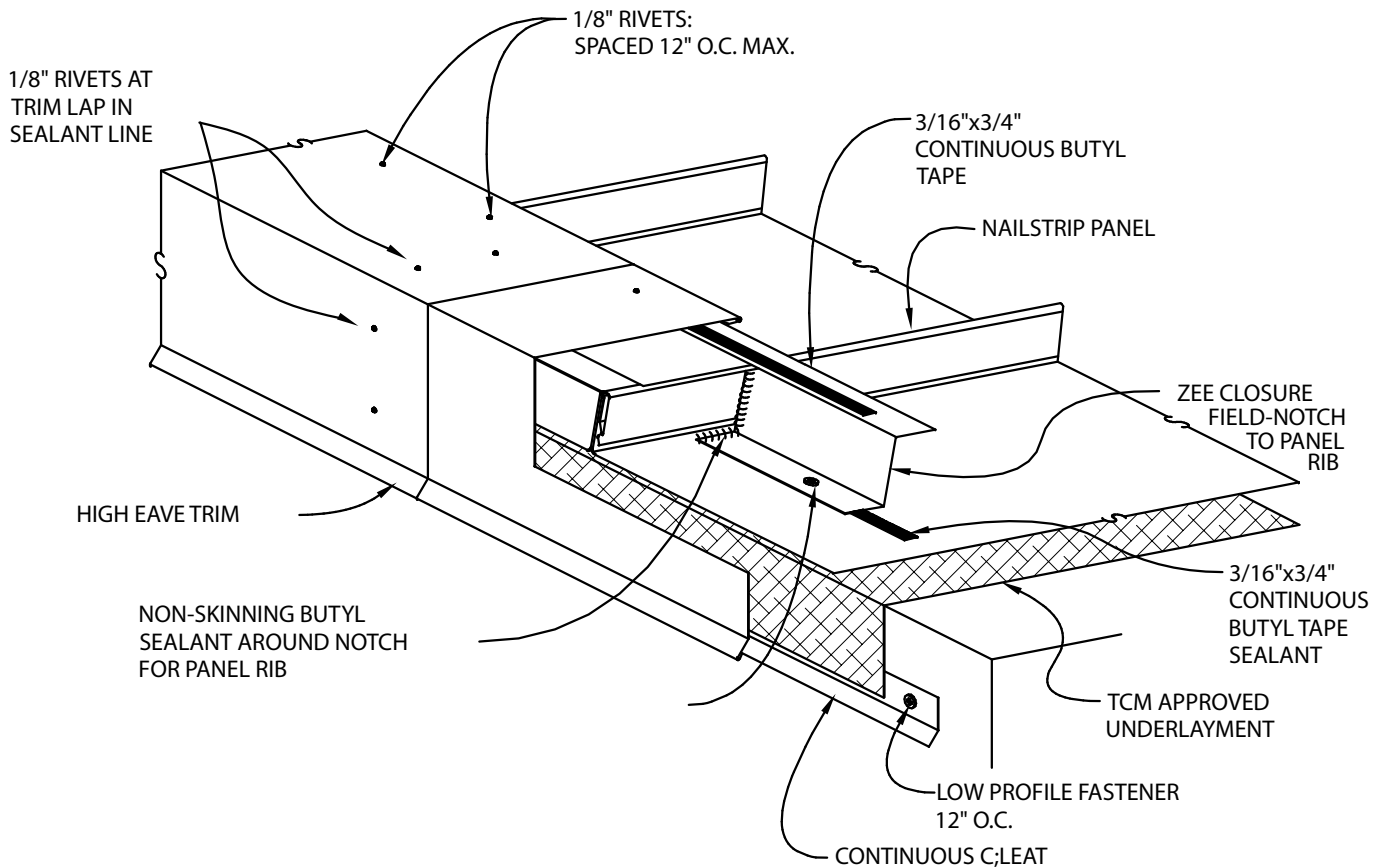
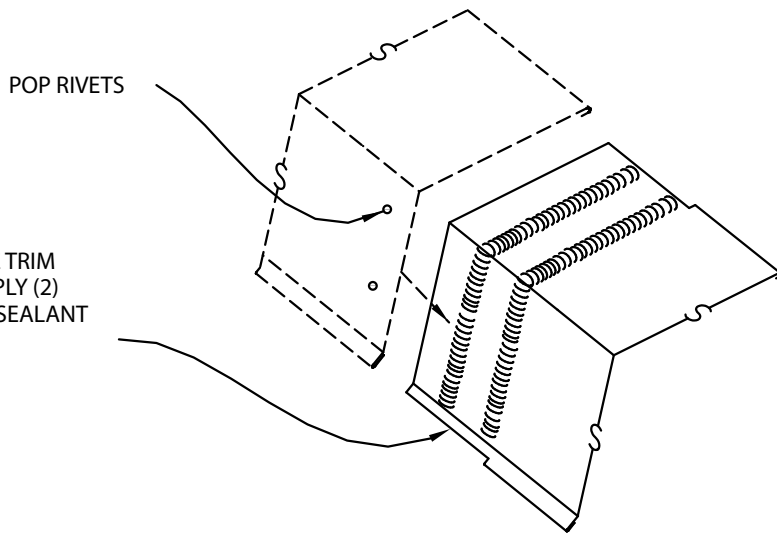




# Nailstrip

High Eave  
ISO View

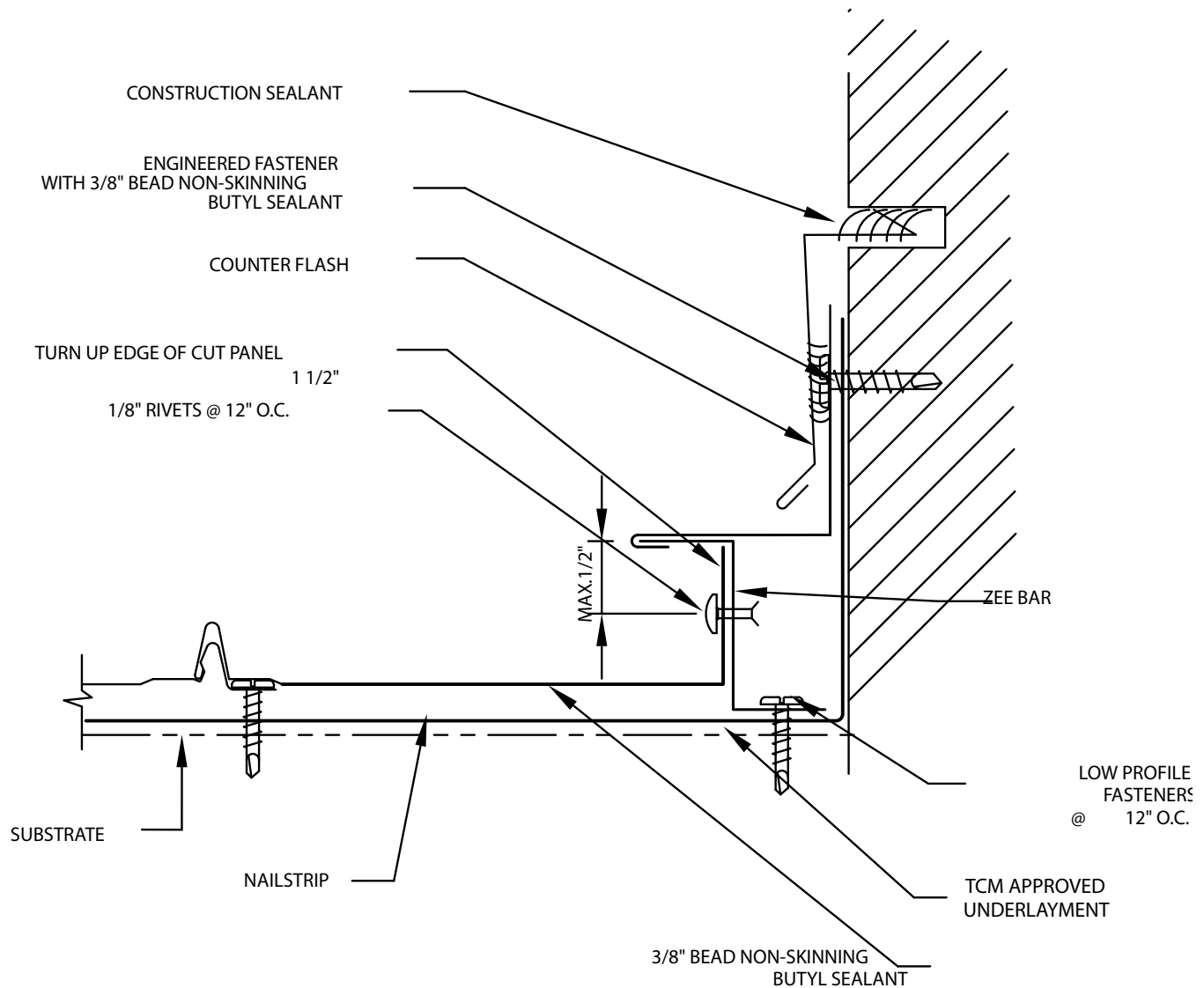
FIELD NOTCH HEMS OF COVERED EAVE TRIM  
3" LONG AND 1/8" WIDE AT SPLICE. APPLY (2)  
3/8" BEADS OF NON-SKINNING BUTYL SEALANT  
TO TOPSIDE OF COVERED EAVE TRIM  
BEFORE ENGAGING. USE 2 POP RIVETS  
TO FASTEN.





# Nailstrip

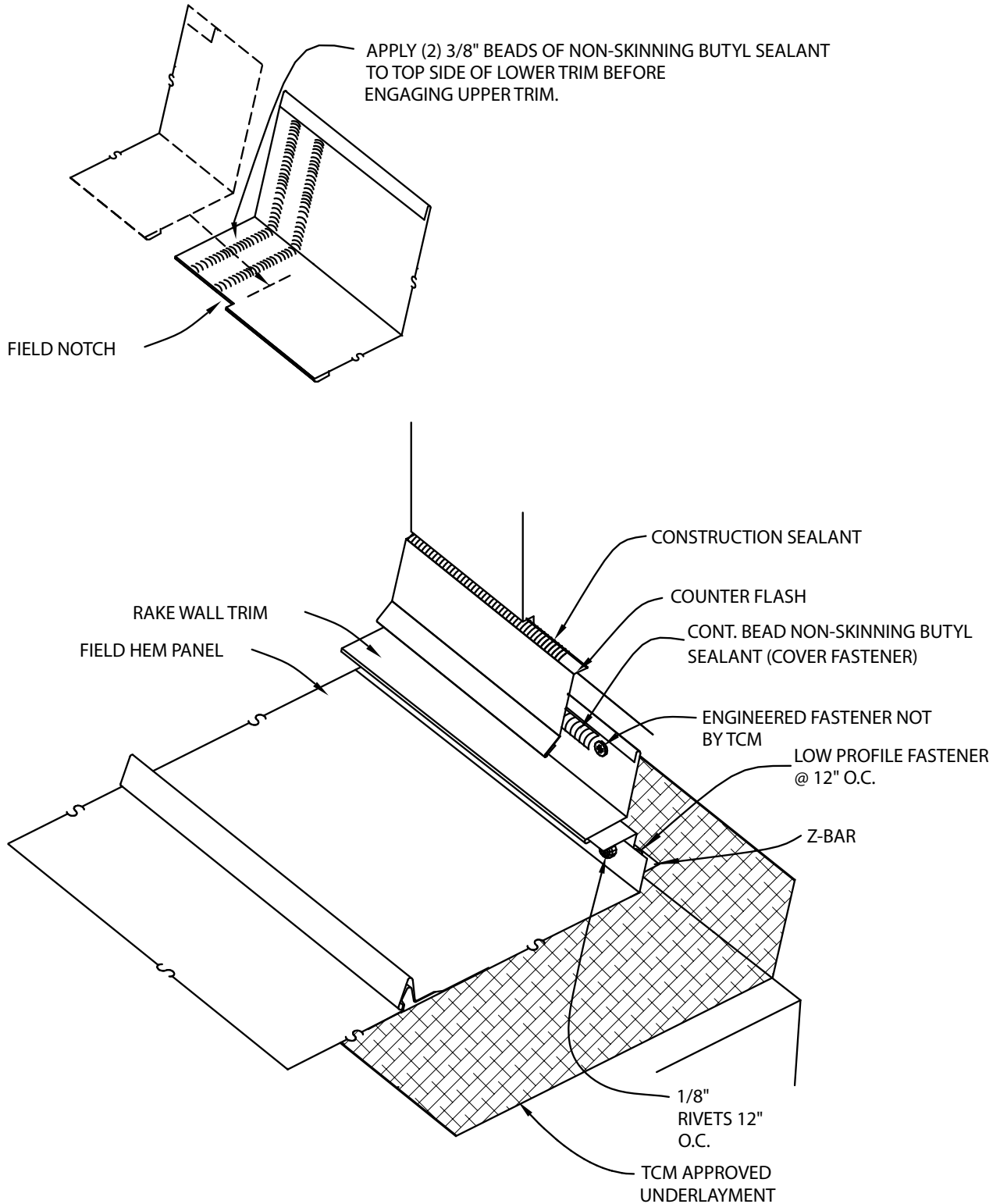
Side Wall





# Nailstrip

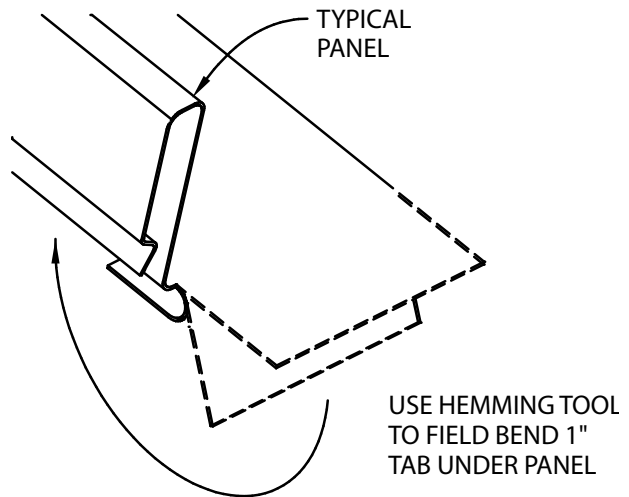
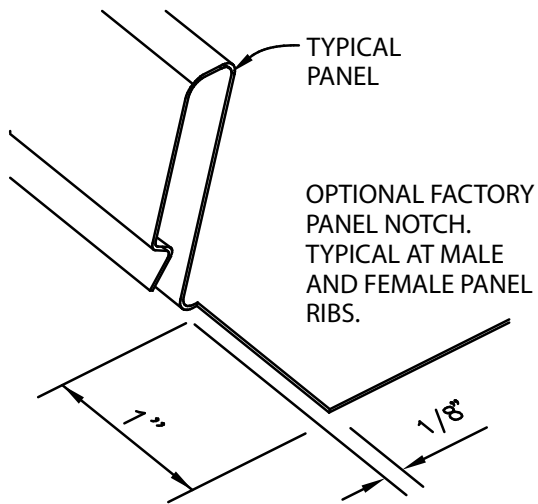
Side Wall  
ISO View



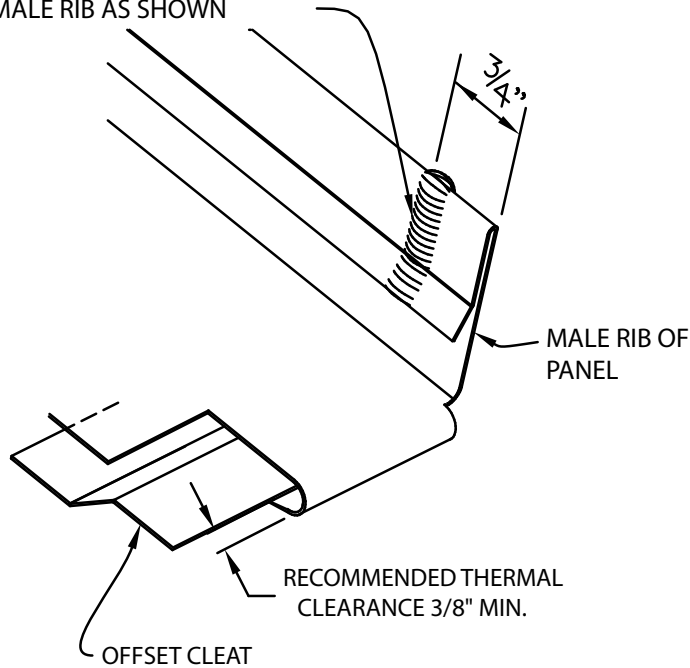


# Nailstrip

## Field Hem




APPLY 3/8" BEAD OF NON-SKINNING BUTYL SEALANT ON BOTH SIDES OF MALE RIB AS SHOWN



# Notes



**A  Greener Choice for Your Metal  
Roofing and Building Systems!**

**TRIAD CORRUGATED METAL, INC.**

**208 Luck Road Asheboro, NC 27205**

**Phone: 336 625 9727 • Fax: 336 625 9722**

**[www.triadmetalroof.com](http://www.triadmetalroof.com)**